

Ergänzungsmaterial zu

SENIOREN MUSIZIEREN:
BLOCKFLÖTE

Band 1
(ED 21595)



2. Stimme (Lehrerstimme) zu Übungen und Stücken
Echoübungen

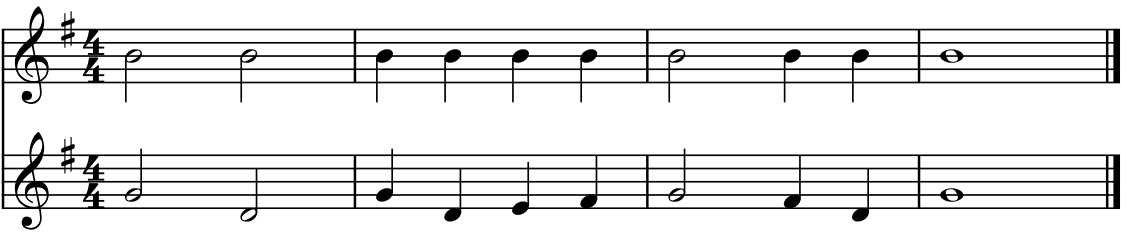


Mainz • London • Berlin • Madrid • New York • Paris • Prague • Tokyo • Toronto

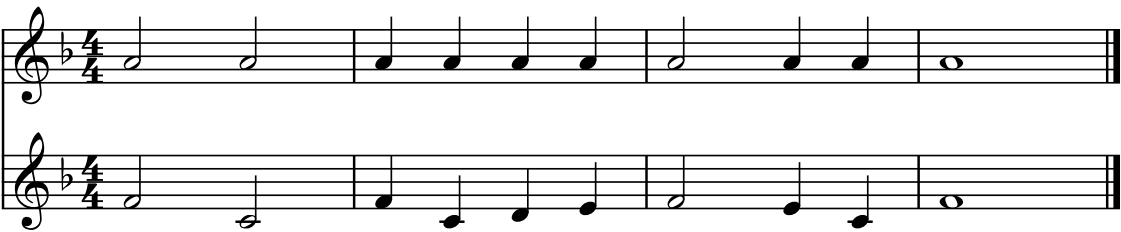
© 2019 SCHOTT MUSIC GmbH & Co. KG, Mainz • Printed in Germany

Zu allen einstimmigen Übungen und Stücken ohne Begleitung finden Sie hier sehr einfache 2. Stimmen. Sie dienen lediglich der Untermalung und folgen rhythmisch den ersten Stimmen. Verschiedene Rhythmen werden in den sich im Lehrwerk befindlichen Duetten erarbeitet.

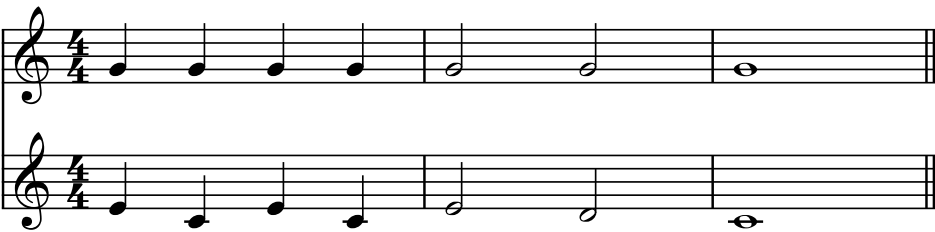
1



3



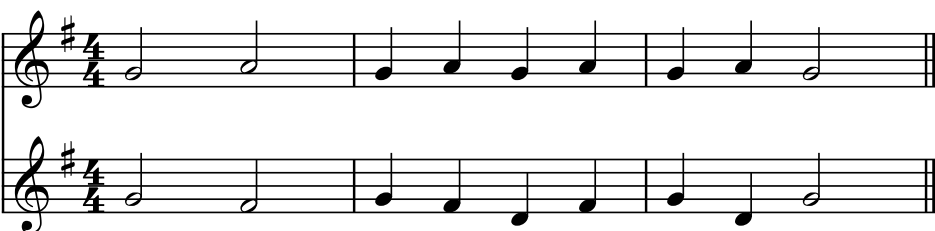
9



11



12



13

Exercise 13, measures 1-2. The music is in treble clef with a key signature of one sharp (F#) and a 3/4 time signature. The melody consists of quarter notes: G4, A4, B4, C5, B4, A4, G4. The bass line consists of quarter notes: G3, A3, B3, C4, B3, A3, G3.

Exercise 13, measures 3-4. The melody continues with quarter notes: F#4, G4, A4, B4, A4, G4, F#4. The bass line continues with quarter notes: F#3, G3, A3, B3, A3, G3, F#3.

19

Exercise 19, measures 1-2. The music is in treble clef with a key signature of two flats (Bb, Eb) and a 3/4 time signature. The melody consists of quarter notes: Bb4, C5, Bb4, Ab4, Gb4, Fb4. The bass line consists of quarter notes: Bb3, C4, Bb3, Ab3, Gb3, Fb3.

21

Exercise 21, measures 1-2. The music is in treble clef with a key signature of two flats (Bb, Eb) and a 4/4 time signature. The melody consists of quarter notes: Bb4, C5, Bb4, A4, G4, F4, E4, D4. The bass line consists of quarter notes: Bb3, C4, Bb3, A3, G3, F3, E3, D3.

22

Exercise 22, measures 1-2. The music is in treble clef with a key signature of two flats (Bb, Eb) and a 4/4 time signature. The melody consists of quarter notes: Bb4, C5, Bb4, A4, G4, F4, E4, D4. The bass line consists of quarter notes: Bb3, C4, Bb3, A3, G3, F3, E3, D3.

23

24

30

32

33

34

Musical notation for exercise 34, measures 1-6. The piece is in G major (one sharp) and 4/4 time. The melody in the treble clef consists of: G4 (half), A4 (quarter), B4 (quarter), C5 (quarter), B4 (quarter), A4 (quarter), G4 (half). The bass clef accompaniment consists of: G3 (half), G3 (half), A3 (quarter), B3 (quarter), C4 (quarter), B3 (quarter), A3 (quarter), G3 (half). Both staves end with a repeat sign.

35

Musical notation for exercise 35, measures 1-6. The piece is in G major (one sharp) and 4/4 time. The melody in the treble clef consists of: G4 (half), A4 (quarter), B4 (quarter), C5 (quarter), B4 (quarter), A4 (quarter), G4 (half). The bass clef accompaniment consists of: G3 (half), G3 (half), A3 (quarter), B3 (quarter), C4 (quarter), B3 (quarter), A3 (quarter), G3 (half). Both staves end with a repeat sign.

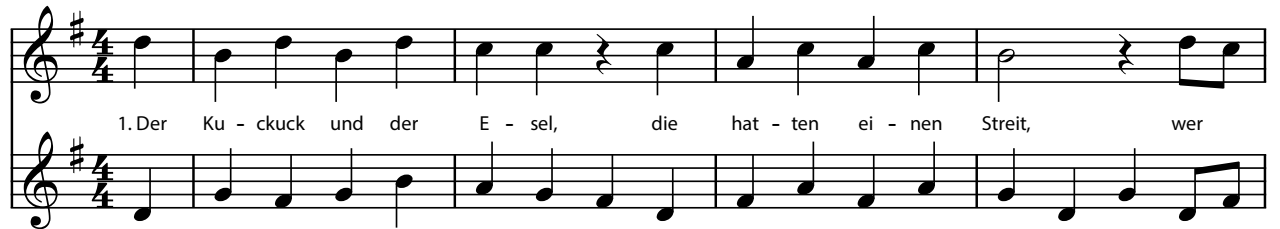
36

Musical notation for exercise 36, measures 1-6. The piece is in G major (one sharp) and 4/4 time. The melody in the treble clef consists of: G4 (quarter), A4 (quarter), B4 (quarter), C5 (quarter), B4 (quarter), A4 (quarter), G4 (half). The bass clef accompaniment consists of: G3 (quarter), G3 (quarter), A3 (quarter), B3 (quarter), C4 (quarter), B3 (quarter), A3 (quarter), G3 (half). Both staves end with a repeat sign.

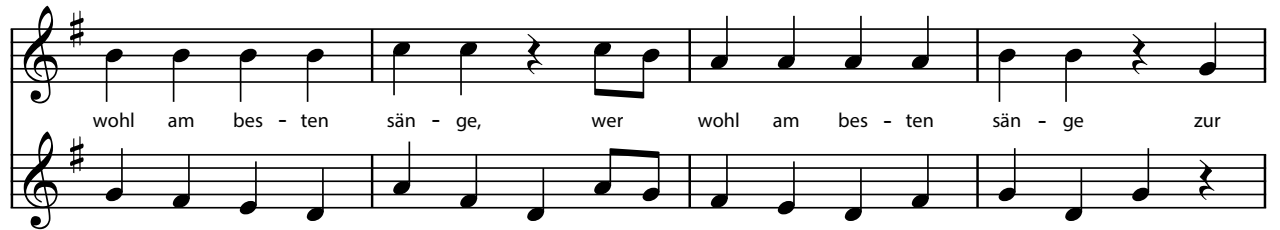
43

Musical notation for exercise 43, measures 1-6. The piece is in G major (one sharp) and 3/4 time. The melody in the treble clef consists of: G4 (quarter), A4 (quarter), B4 (quarter), G4 (half). The bass clef accompaniment consists of: G3 (quarter), G3 (quarter), A3 (quarter), B3 (quarter), C4 (quarter), B3 (quarter), A3 (quarter), G3 (half). Both staves end with a repeat sign.

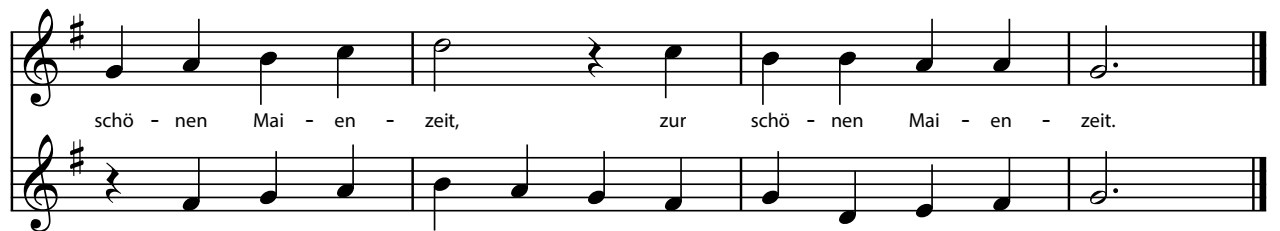
Musical notation for exercise 43, measures 7-12. The piece is in G major (one sharp) and 3/4 time. The melody in the treble clef consists of: A4 (quarter), B4 (quarter), C5 (quarter), B4 (quarter), A4 (quarter), G4 (half). The bass clef accompaniment consists of: G3 (quarter), G3 (quarter), A3 (quarter), B3 (quarter), C4 (quarter), B3 (quarter), A3 (quarter), G3 (half). Both staves end with a repeat sign.



1. Der Ku - ckuck und der E - sel, die hat - ten ei - nen Streit, wer



wohl am bes - ten sän - ge, wer wohl am bes - ten sän - ge zur



schö - nen Mai - en - zeit, zur schö - nen Mai - en - zeit.

Echoübungen

mit zwei Tönen:

1

2

mit drei Tönen:

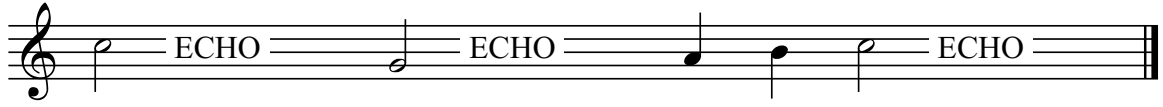
1

2

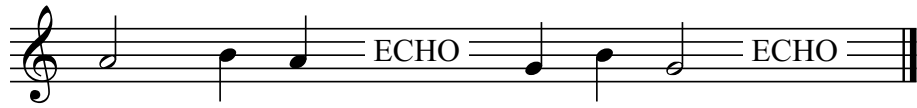
3

mit vier Tönen:

1



2



3



mit fünf Tönen:

1 



2 



3 

